

MK-LR

Handheld Thermal Imaging Monocular

- Shutterless
- Power Safety
- Safety Detection
- Environmental Protection
- Intelligent Industry
- Search Rescue
- Forest Fire Prevention
- Outdoor Night Vision
- Wireless Image Transmission
- Laser Ranging



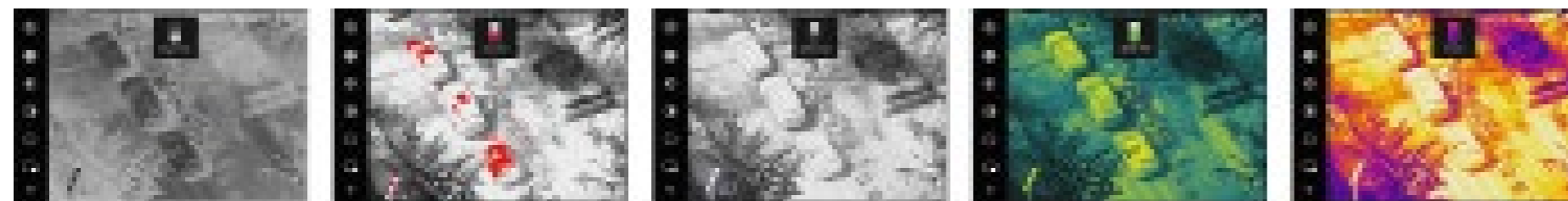
Handheld Thermal Imaging Monocular

The MK-LR series adds precise rangefinding capabilities to the MK-IR series products, enabling accurate positioning and target searching.

Specifications

Model	MK-LR-E	MK-LR-Q
Detector	Uncooled VOx Microbolometer	
Resolution, pixels	384×288/12μm	640×512/12μm
Objective Lens(F1.0)	19mm 25mm 35mm 50mm	25mm 35mm 50mm
Field of View	13.9° ×10.4° 10.6° ×7.9° 7.5° ×5.7° 5.3° ×4.0°	17.6° ×14.1° 12.6° ×10.1° 8.8° ×7.0°
Visual Magnification	2.09~8.37 2.75~11.01 3.85~15.41 5.5~22.01	1.61~6.45 2.26~9.03 3.23~12.9
Spectral Band	8~14μm	
Eyepiece Diopter	-5~+5	
Eye Relief	20mm	
NETD	≤ 35mk@300K	
Display	0.39" OLED 1024x768	
Digital Zoom	1x, 2x, 4x	
Frame Rate.Hz	50Hz	
Protection Rating	IP67	
Measuring Distance	1200m	
Power Source	3400mAh Li-ion Battery	
Standby Time	≥ 5h	
Interface	Type-C	
Operating Temperature	-20°C ~+50°C	
Detection Range(Human)	19mm/1800m 25mm/2370m 35mm/3310m 50mm/4170m	
Detection Range(Animal)	19mm/1590m 25mm/2090m 35mm/2920m 50mm/4170m	

Image Mode



Black Hot

Red Hot

White Hot

Green Hot

Fusion

Effective Range

